

Adding Panels

There are two ways a panel can be added, Auto Discover and Manually.

Auto Discover

Panels can easily be discovered by mDNS look ups on the same subnet the Blue Pill is on. This makes it very easy to discover and include a panel in the configuration. mDNS will usually search the current subnet, but with a correctly configured Blue Pill, panels on other subnets can easily be included too as long as the IP and port is known to the user.

Add Panel to Default Canvas

Discover Panels

Add Panel Manually

Panels found on the network

Searching for panels...

Search...

Model	Serial	IP and Port	Actions
SK_BLUEPILL	443033	127.0.0.1:9923	Select
SK_FRAMESHOTDUO	434972	192.168.11.44:9923	Select
SK_RCPPRO	443148	192.168.11.50:9923	Select
SK_RACKFLYTRIO	443475	192.168.11.45:9923	Select
SK_PTZPRO	440715	192.168.11.11:8000	Select
SK_MKA2	443110	192.168.11.12:9923	Select
SK_BLUEPILL	443042	192.168.11.130:8000	Select
SK_PTZFLY	443130	192.168.11.18:9923	Select
SK_PTZEXTREMEV2	440614	192.168.11.10:8000	Select
SK_RACKFUSION2	434971	192.168.11.166:9923	Select

Rows per page:

10

1-10 of 41

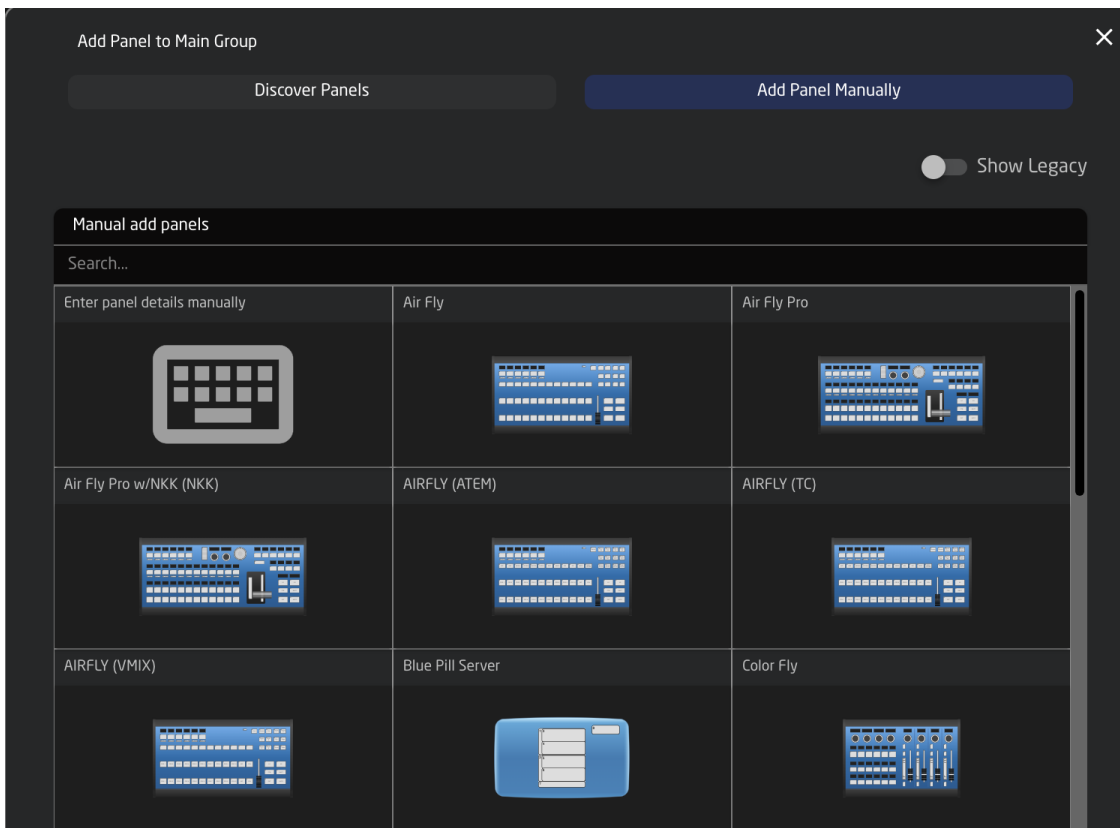
<

>

Pressing SHIFT + the green Select button will allow for multiple panel selection.

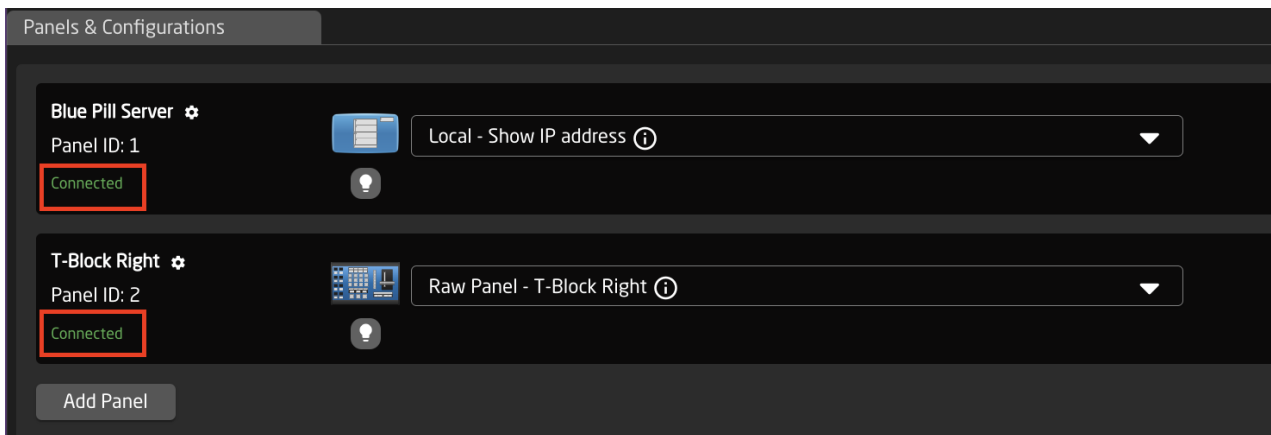
Manually Added

Panels can be picked from SKAARHOJs included library of products. Following a manual choice of panel, the user will have to enter the IP address himself including any constraints desired. See the Panel Details section for set up.

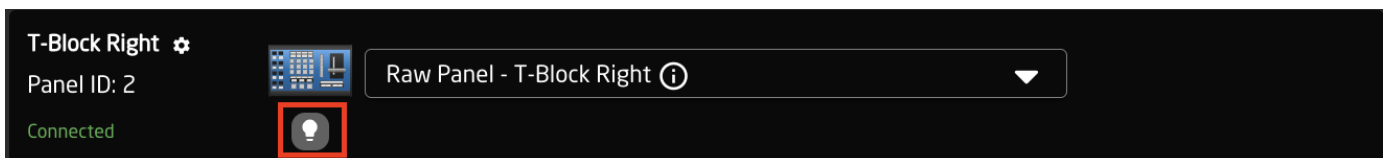


Panel Details

Panels have their status displayed clearly in the overviews on the Home screen.

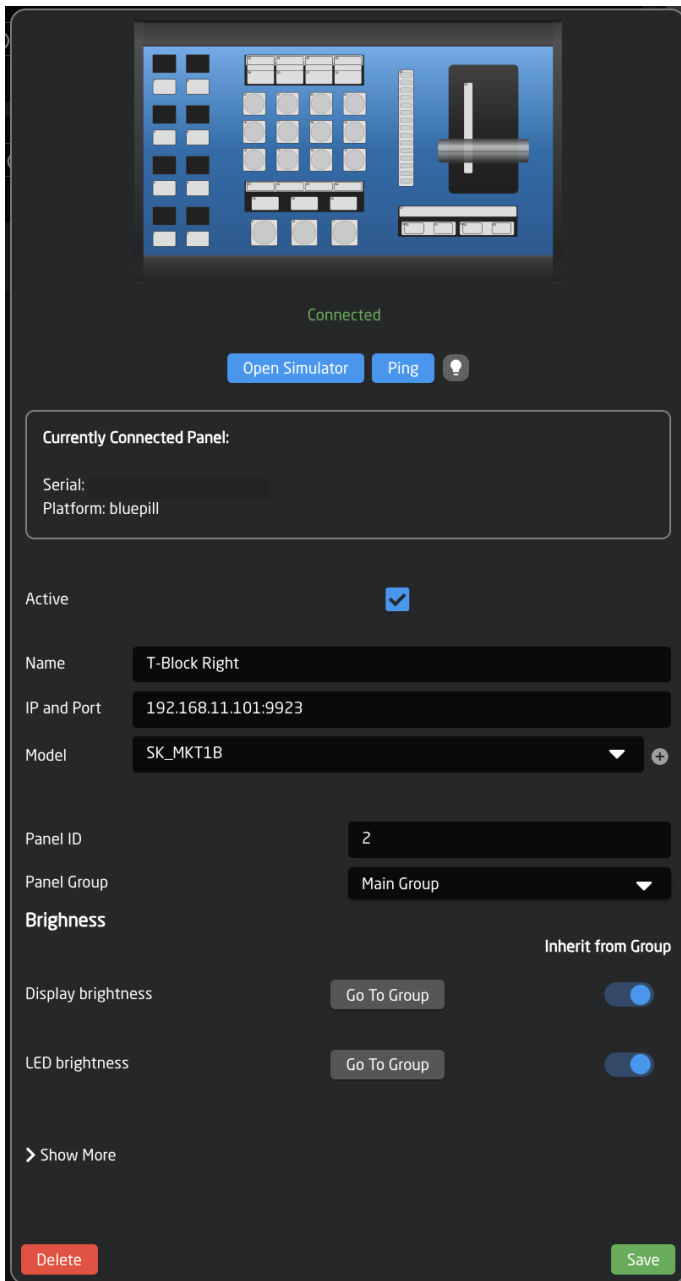


There is a button for panel identification which can be used to light up the panel temporarily. This is very useful with large collections of panels.



Clicking on a panel name in the Panels section will open up the details. Here the name, ID number, and Active status of the panel can be changed. By default the controller name will be the common name of the model name, the ID will be auto generated in order, and the status will be active.

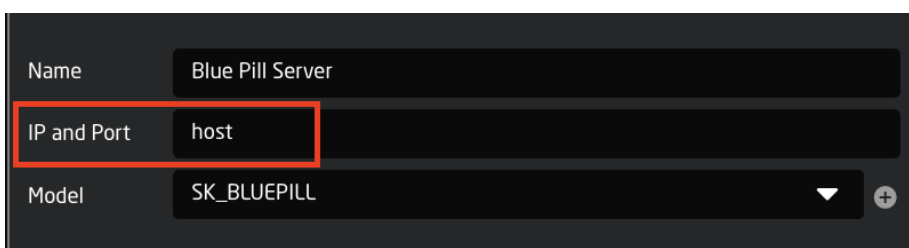
A controller's status needs to be active for use.



The screenshot shows a control panel interface with a top section displaying a grid of buttons and a vertical slider. Below this, a green "Connected" status indicator is visible. Two buttons, "Open Simulator" and "Ping", are present. A section titled "Currently Connected Panel:" shows "Serial:" and "Platform: bluepill". Below this, an "Active" checkbox is checked. The "Name" field is "T-Block Right", "IP and Port" is "192.168.11.101:9923", and "Model" is "SK_MKT1B". Further down, "Panel ID" is "2" and "Panel Group" is "Main Group". A "Brighness" section has "Display brightness" and "LED brightness" controls, each with a "Go To Group" button and a toggle switch. An "Inherit from Group" checkbox is also present. A "> Show More" link is at the bottom left, and "Delete" and "Save" buttons are at the bottom.

By default our controllers connect using port 9923. It is important to include the port number, separated from the IP address by a colon (:), for example 192.168.50.236:9923

A panel with Blue Pill inside that is operating as the main panel will not show its IP address or port in the panel details, but will instead say **host**. This has indicates internal connection instead of an external connection.



The screenshot shows a control panel interface with three fields: "Name" with value "Blue Pill Server", "IP and Port" with value "host", and "Model" with value "SK_BLUEPILL". The "IP and Port" field is highlighted with a red rectangle.

Confirm Connection

A panel that has established a connection with a blue pill will no longer display “Waiting for Blue Pill” or “Waiting for Raw Panel”.



Revision #2

Created 24 March 2022 10:32:37 by Heather Pedersen

Updated 5 June 2025 07:27:13 by Heather Pedersen