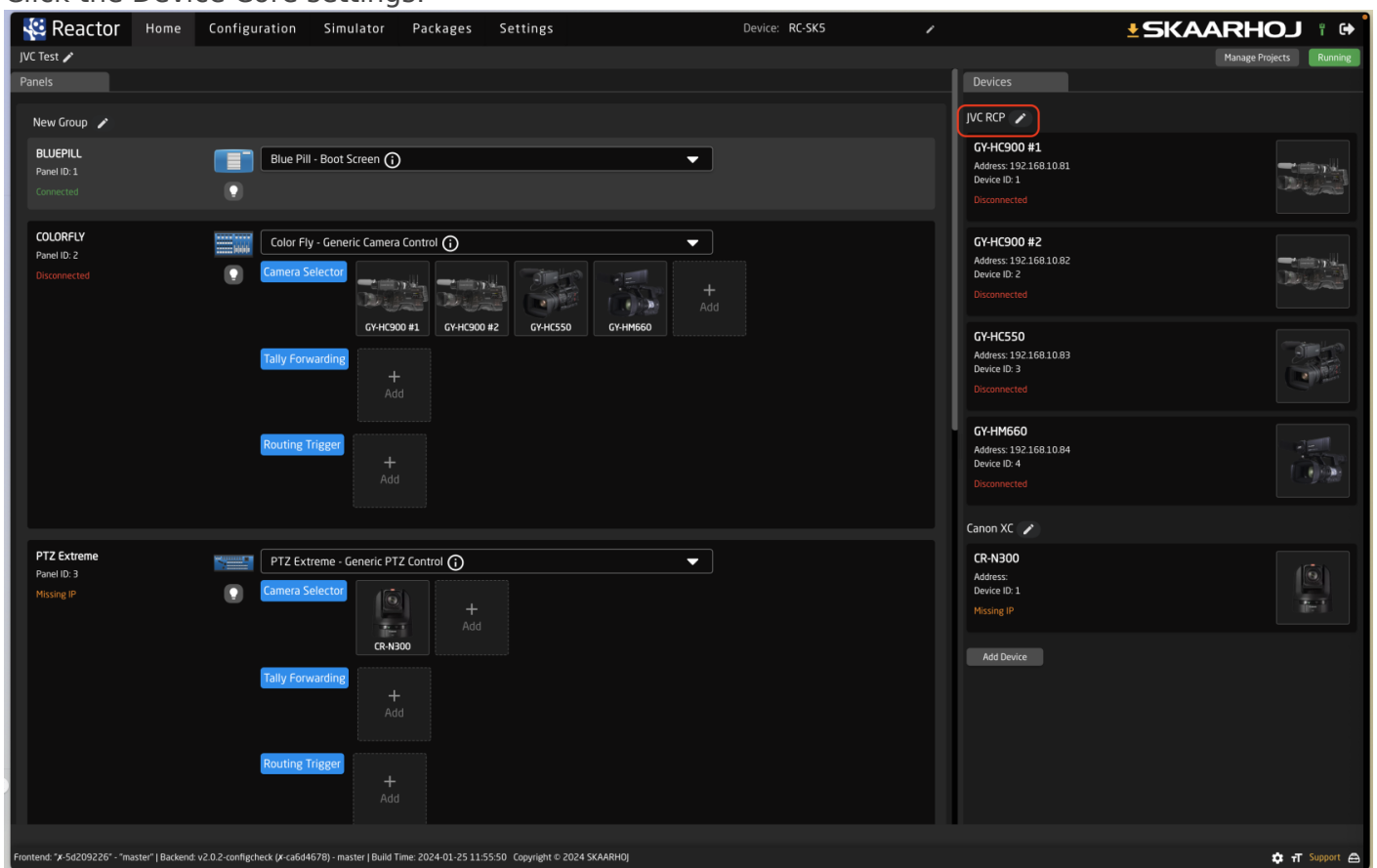


Check Device Core for Unused Parameters

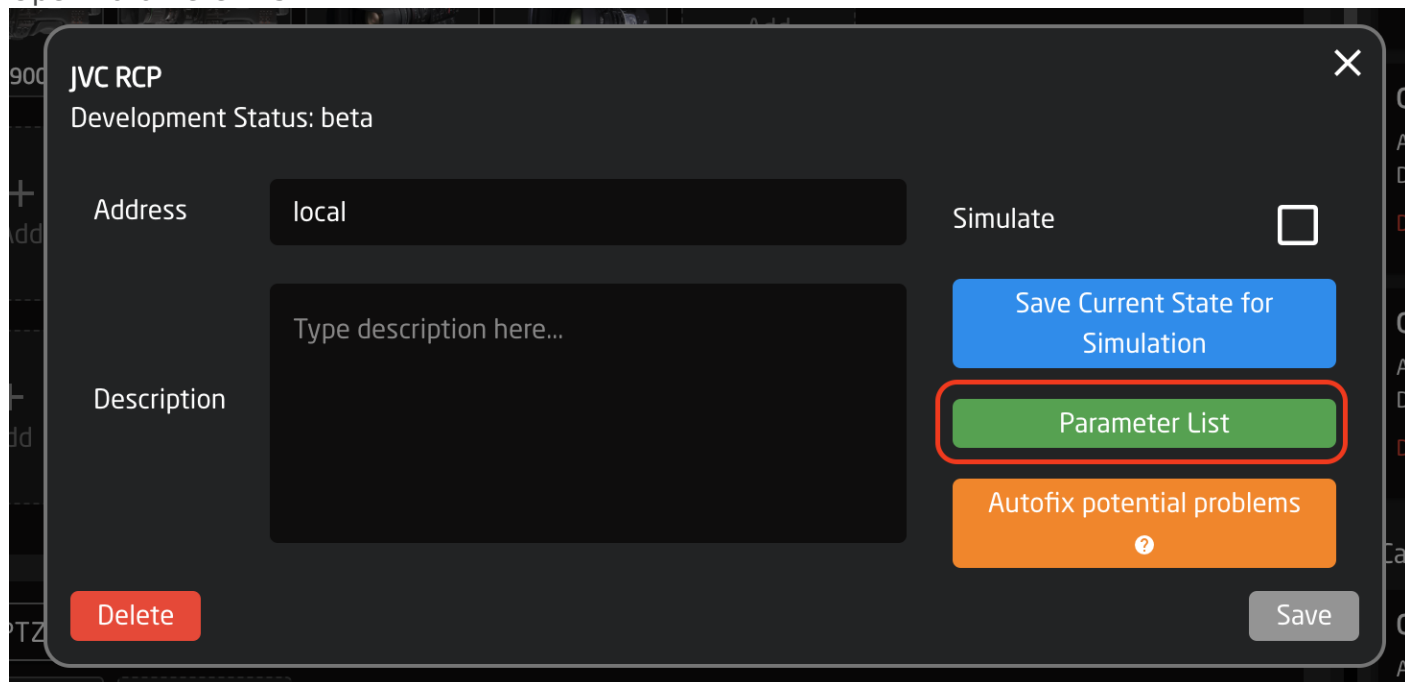
If you have a Config, and would like to know what parameters aren't mapped to a config, is that easy to check in Reactor after version 2.0.2.

Open Home Screen of Reactor

Click the Device Core settings:



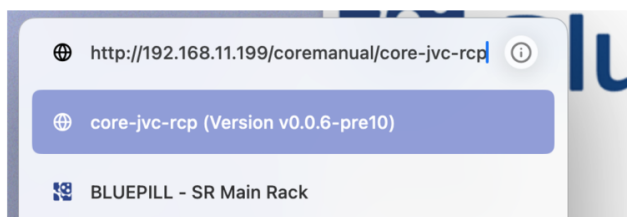
Open Parameter List:



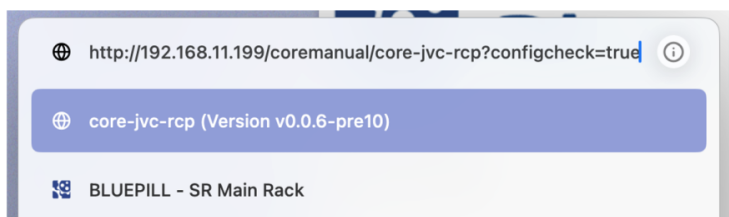
The screenshot shows a dark-themed dialog box titled "JVC RCP" with a subtitle "Development Status: beta". It features a close button (X) in the top right corner. The dialog is divided into two main sections: "Address" and "Description". The "Address" section has a text input field containing "local". The "Description" section has a large text area with the placeholder text "Type description here...". To the right of the "Address" field is a "Simulate" checkbox, which is currently unchecked. Below the "Description" field are three buttons: "Save Current State for Simulation" (blue), "Parameter List" (green, highlighted with a red border), and "Autofix potential problems" (orange). At the bottom left is a "Delete" button, and at the bottom right is a "Save" button.

Add "?configcheck=true" after the address:

Before



After



Now the parameter list shows what Parameters are added to the config, and who isn't:

JVC RCP

(Version v0.0.6-pre10)

Development status: beta

Core for JVC RCP Broadcast cameras

ParameterCount: 60

Model: PTZ-400N

ParameterClass: Simple

Parameter	GY-HC550 (1) JVC RCP - Model GY-HC550 Supports Discovery Development Status: beta	GY-HC900 (2) JVC RCP - Model GY-HC900 Supports Discovery Development Status: beta	GY-HM660 (3) JVC RCP - Model GY-HM660 Supports Discovery Development Status: beta	PTZ-100 (4) JVC RCP - Model PTZ-100 Supports Discovery Development Status: beta	PTZ-200N (6) JVC RCP - Model PTZ-200N Supports Discovery Development Status: beta	PTZ-400N (5) JVC RCP - Model PTZ-400N Supports Discovery Development Status: beta
AE						
AE Level Control Perform AE Level Control aeLevelControl	Control: One-Shot Trigger Feedback: - Dimensions: Mode: (2) 1: Up 2: Down -----			-		
AE Level Control Incremental Control AE Level with incremental control style aeLevelControlIncremental	Control: Incremental control Feedback: String <div>Used in config</div>			-		
AE Level Value Show AE Level aeLevelValue	Control: - Feedback: String			-		
Full Auto Perform Full Auto fullAuto	Control: Binary Feedback: -			-		
Exposure						
Parameter	GY-HC550	GY-HC900	GY-HM660	PTZ-100	PTZ-200N	PTZ-400N
Exposure Set Exposure exposure	-			Control: 0:Auto 1:ShutterPriority 2:irisPriority 3:Manual Feedback: ----- <div>Used in config</div>	-	
Focus						
Parameter	GY-HC550	GY-HC900	GY-HM660	PTZ-100	PTZ-200N	PTZ-400N
Focus Control Perform Focus Control focusControl	Control: One-Shot Trigger Feedback: - Dimensions: Mode: (2) 1: Far 2: Near ----- : (3) -----					
Focus Control-Speed Type Control Focus with speed control type focusControlSpeed	Control: Integer [-3:3] Feedback: - <div>Used in config</div>					
Focus Mode	Control:					