

IBC 2024

- [Goodie Bag](#)

Goodie Bag



**Get All the Knowledge You
Need!**

Learn more at

www.skaarhoj.com

Booklet

Dig into the world of SKAARHOJ and explore the details of our universal controllers!

[Download Booklet](#)



Reactor Booklet

Reactor is the software platform that runs SKAARHOJ's universal controllers. This is where you unleash and explore the powerful SKAARHOJ technology when setting up your controller.

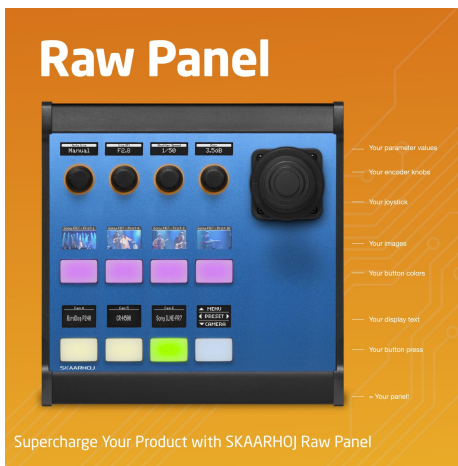
[Download Reactor Booklet](#)



Raw Panel

Raw Panel is a solution for system integrators and manufacturers! For those who created software applications and are missing the tactile control bit! Any SKAARHOJ panel can be set to Raw Panel mode - then you program your software to receive and send triggers such as keypresses, pulses and analog values to/from panel - all via simple TCP commands. You have full control and SKAARHOJ becomes your panel - no need to develop hardware from scratch.

[Raw Panel Booklet Download](#)



Solutions

Learn all about the use cases for SKAARHOJ and partner brands, something we call 'trophies'.

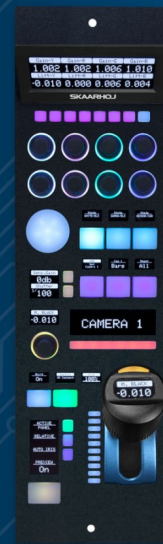
[View Complete Trophies List](#)

Shade RED Komodo with RCP Pro

SKAARHOJ



Use amazing cinematic class cameras from RED in live production workflows with full lens and color control.



Trophy #89

Shade RED KOMODO with RCP Pro

SKAARHOJ

Benefits

- ★ RED KOMODO enabled for broadcast workflows
- ★ Shade RED KOMODO in live productions
- ★ Start and stop recording remotely
- ★ Multiple lens workflows
- ★ Multi camera control
- ★ Supported by RED

What to expect

RCP Pro allows RED KOMODO to integrate in traditional live broadcast production workflows. The RCP Pro form factor fits right into most control rooms and OB trucks.

RCP Pro can control the parameters you know from the KOMODO's web interface, including color control parameters, white balance, shutter speed, audio settings etc. of this amazing camera.

If the lens connects electrically to the RED KOMODO camera, RCP Pro can control iris, zoom and focus directly via the camera. Other lenses will require parallel control via analog or serial signals and RCP Pro supports this seamlessly via Blue Pill Extension cables.

Recording to local media can be toggled remotely from the RCP Pro. Most workflows will prefer a single RCP per camera, but RCP Pro natively supports up to 8 cameras in the built-in camera selector. This integration is actively supported and suggested by RED.

Model Support

RED KOMODO and RED V-RAPTOR (fully supported as well)

Configurations and Alternatives

- **"RED RCP2 Configuration - Pro Class"** - Default profile
Any SKAARHOJ controller can control RED KOMODO and V-RAPTOR when combined with Blue Pill. These are particularly relevant:
- **RCPv2** - SKAARHOJ's mainstream RCP supports the same configuration via Blue Pill.
- **Color Fly Multi camera Control** - control multiple cameras directly with motorized faders
- **Color Fly Stereoscopic Control** - specialty configuration for control of 8 rigged pairs (16 cameras) of stereoscopic capture with RED KOMODO.

Technical Notes

The camera can be accessed via Wifi or with cabled ethernet connectivity (optional RED accessory). SKAARHOJ always recommends cabled workflows.

RCP Pro has a 1G Ethernet port with PoE enabled for a single cable connection. Alternatively, you can power RCP Pro with 12V DC. RCP Pro consumes up to 6W. See full product specs on our website.

Check out RED's website at <https://www.red.com/third-party-accessories>

Application Ideas

- Place your RED KOMODO with lens on a RUSHWORKS PTX3 Pan-Tilt head to make it a complete PTZ camera controlled by SKAARHOJ.
- Use a MultiDyne Silverback V fiber system with RED KOMODO, RCP Pro and a Fujinon Lens with RS-232 control. See Trophy #115

Learn More



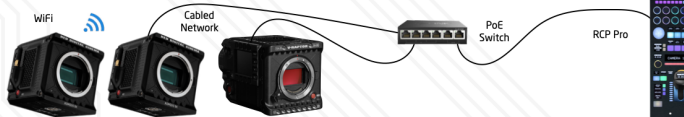
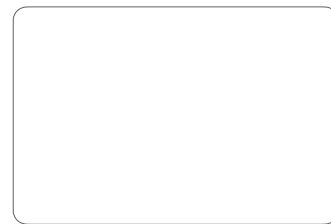
Demonstration
video
Manuals, Cabling
Guides, Parameter
Support, Press Kit

Blue Pill and Reactor

Blue Pill is a SKAARHOJ platform that boosts the capacity and capability of SKAARHOJ UniSketch controllers. Reactor is our flagship panel management application running on Blue Pill. Blue Pill technology is also available as an option (BP1) for many controllers as an alternative to UniSketch.



Reseller / Notes



March 2022

If You Want to Know More! Reach Out to Our Sales Team



Maciek Janiszewski
Technical Sales Manager
maciek@skaarhoj.com



Tomasz Szypryt
Sales Manager EMEA
tomasz@skaarhoj.com