

Tally-MA on Raw Panel

With SKAARHOJ's Tally-MA application (*xpanel-tallyma* package), you have the capability to **connect one or more WiFi based Tally-MA lamps** to a SKAARHOJ product.



The SKAARHOJ product allows direct control of the lamps using UDP packets, eliminating the need for the Tally-MAs software application TallyServer. However, the TallyServer software is still essential for configuring the lamps' static IP addresses and Wi-Fi connection.

Multiple Tally-MA lamps will be grouped into a single Raw Panel device. This configuration allows SKAARHOJ to assign tally information directly within Reactor.

Tally-MA Configuration

For guidance on configuring the lamps, please visit [Tally-MA](#). We cannot assist with this process. It requires connecting the lamps to your computer, downloading the TallyServer software, and then setting the Wi-Fi credentials and **static IP addresses**. The latter is necessary for compatibility with SKAARHOJ's *xpanel-tallyma*.

Ensure the lamps are on the same network as the SKAARHOJ product you intend to use for control. Using a web browser, navigate to their IP addresses. If set up correctly, you'll see a webpage listing commands. Once confirmed, proceed with the next steps.

Configuration

On the 'Packages' tab of your SKAARHOJ product, after successful installation, you'll find the configuration for *xpanel-tallyma*. Post-installation and initialization, it should resemble the following layout:

The screenshot displays the SKAARHOJ web interface for the *xpanel-tallyma* package. The top navigation bar includes 'System', 'Home', 'Configuration', 'Simulator', 'Packages', and 'Settings'. The current page is titled 'Package > xpanel-tallyma, Version: 0.1.0-pre3'. The interface is divided into two main sections: a configuration sidebar on the left and a log viewer on the right.

Configuration Sidebar (LampArrays):

- Lamps:** A list of lamps with an 'Add Entry' button.
- Name of panel:** 'Tally-MA Lamps'.
- Active:** A toggle switch is turned on. Below it, text reads: 'If set, the Tally Lamp Array panel will be active.'
- Server Port:** '9943'. Below it, text reads: 'Port for the Raw Panel server'.
- Light mode:** 'Basic'. Below it, text reads: 'Light mode for the lamp. Basic means same color for the whole lamp. FrontIsRedOnly means the lamp will show any color to the operator, but only red channel > 25pct to the front'.
- Protocol mode:** 'Not Set'. Below it, text reads: 'Selected protocol mode for the Raw Panel server.'
- Max Clients:** '0'. Below it, text reads: 'Limit on the number of connecting systems. Zero means unlimited.'
- Lock to IPs:** An empty text field. Below it, text reads: 'IP addresses allowed to access. Empty indicates no IP restrictions. Separate by semi-colon.'

Log Viewer (Right Pane):

- Buttons: 'Clear config directory', 'Download Logs', 'Uninstall'.
- Log content (repeated):

```
e) - skaaros_prod module=main
2023-08-09, 14:07:45 info License valid, device:bluepill module=main
2023-08-09, 14:07:45 info Tally-MA Lamp Array starting for panel eb4e5552-0 module=main
2023-08-09, 14:07:45 info Raw Panel for (eb4e5552-0) is available on port 9943

module=main
2023-08-09, 15:00:24 info xpanel-tallyma started, version v0.1.0-pre3 (X-ffbf95e) - skaaros_prod module=main
2023-08-09, 15:00:24 info License valid, device:bluepill module=main
2023-08-09, 15:00:24 info Tally-MA Lamp Array starting for panel eb4e5552-0 module=main
2023-08-09, 15:00:24 info Raw Panel for (eb4e5552-0) is available on port 9943

module=main
2023-08-09, 15:00:29 info xpanel-tallyma started, version v0.1.0-pre3 (X-ffbf95e) - skaaros_prod module=main
2023-08-09, 15:00:29 info License valid, device:bluepill module=main
2023-08-09, 15:00:29 info Tally-MA Lamp Array starting for panel eb4e5552-0 module=main
2023-08-09, 15:00:29 info Raw Panel for Tally-MA Lamps (eb4e5552-0) is available on port 9943

[]
module=main
```
- Buttons: 'Clear'.

This configuration allows you to organize multiple Tally-MA lamps into an array to be controlled by a single Raw Panel instance. While it's possible to create several lamp arrays, most users typically only need one.

Add lamps!

Begin by adding the accessible lamps on your network. Click "Add Entry" beside 'Lamps' and follow the prompts. Lamps are numerically named, e.g., Lamp 1, Lamp 2, based on the order they're added.

Lamps

Active

If set, this particular Tally Lamp will be controlled

IP Address

The IP address of the lamp.

Remove

Active

If set, this particular Tally Lamp will be controlled

IP Address

The IP address of the lamp.

Remove

Add Entry

Testing the Raw Panel

(Optional but recommended for understanding)

Using the Raw Panel Explorer, locate the panel you've created in the web UI. The Tally-MA raw panel instance should display as follows in the main window:

XP_TALLYMA	eb4e5552-0	192.168.11.5	9943	rwp2.0A/B	Tally-MA Lamps	1.1-pre6	1ms	Connect		
------------	------------	------------------------------	------	-----------	----------------	----------	-----	---------	--	--

Click Connect and you should see this:

Reference SVG Rendering:



Panel Communication:

HWC#1 State

Mode:
State: Off Dimmed On - Amber (On) Red (On) Green (On)

Output bit:
Off On

Blink:

Color:
Default White Warm Red (B) Rose Pink Purple Amber (B)
Yellow (B) Dark Blue Blue Ice Cyan Spring (B) Green (B) Mint Light Gray
Dark Gray

RGB code: [Pick] #.....

Extended Return Value:
 0 VU Demo Stop Reset Ext

Text:
Title: Solid header
Textline 1:
Textline 2:

Images:
B/W Gray Color Choose File No file chosen

Send full state - Start Demo Stop < Step Step >

Use this to send various types of feedback to the connected panel.

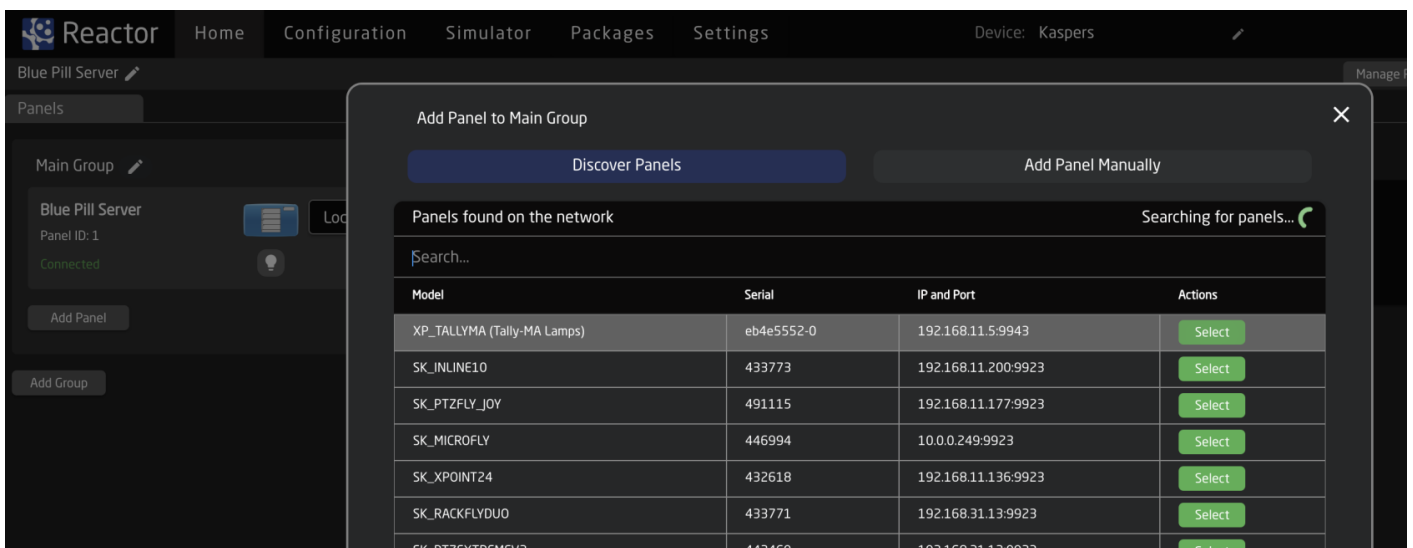
Raw Panel ASCII Command sequence (v1):
Raw Panel ASCII JSON (v2):
Raw Panel Binary Protobuf command:

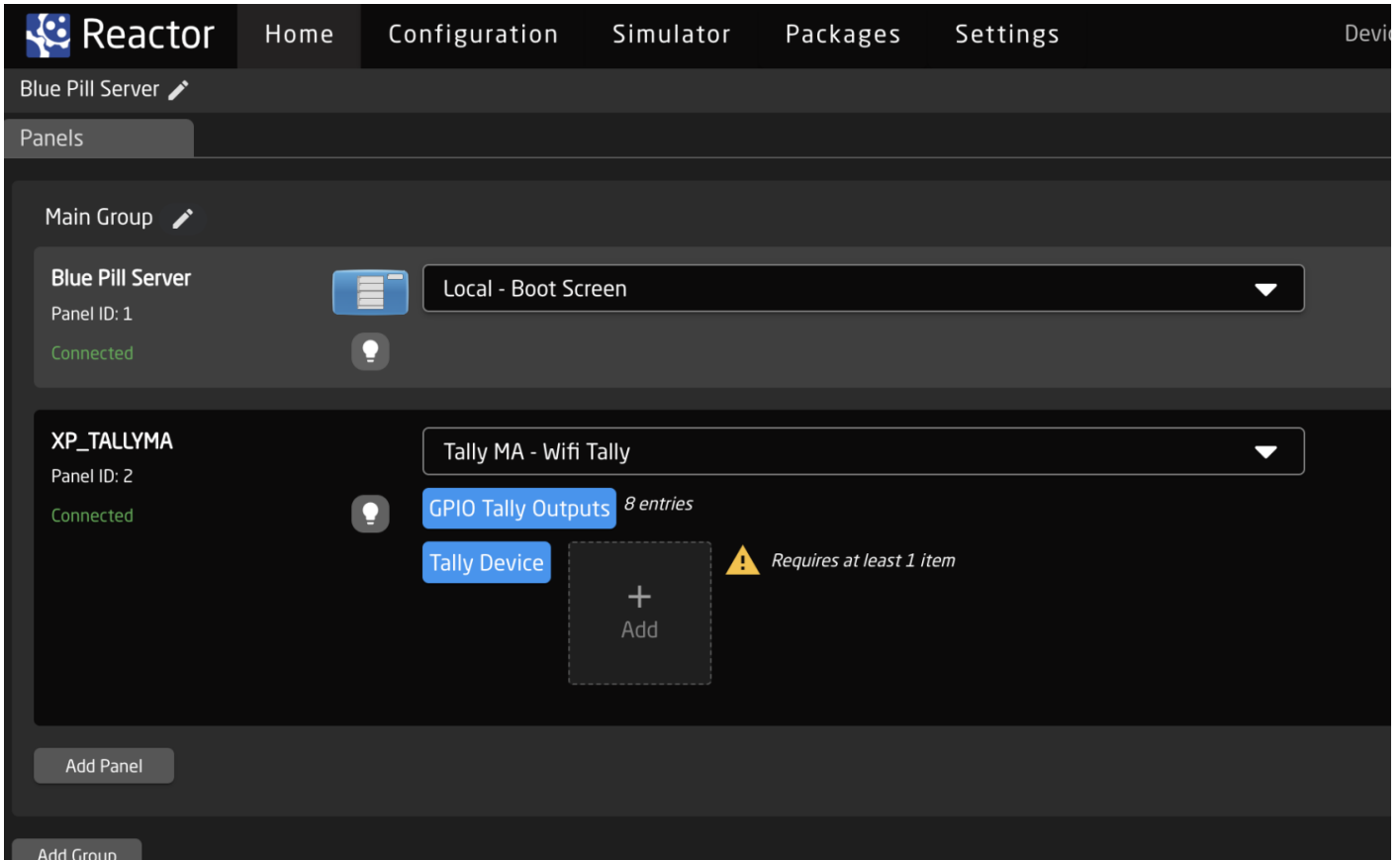
These are the various encodings of the sent command.

Each added lamp is represented by a rectangular placeholder. For example, two lamps appear like this. You can click on each to assign a color. To illuminate them, click "On" and select a preferred hue.

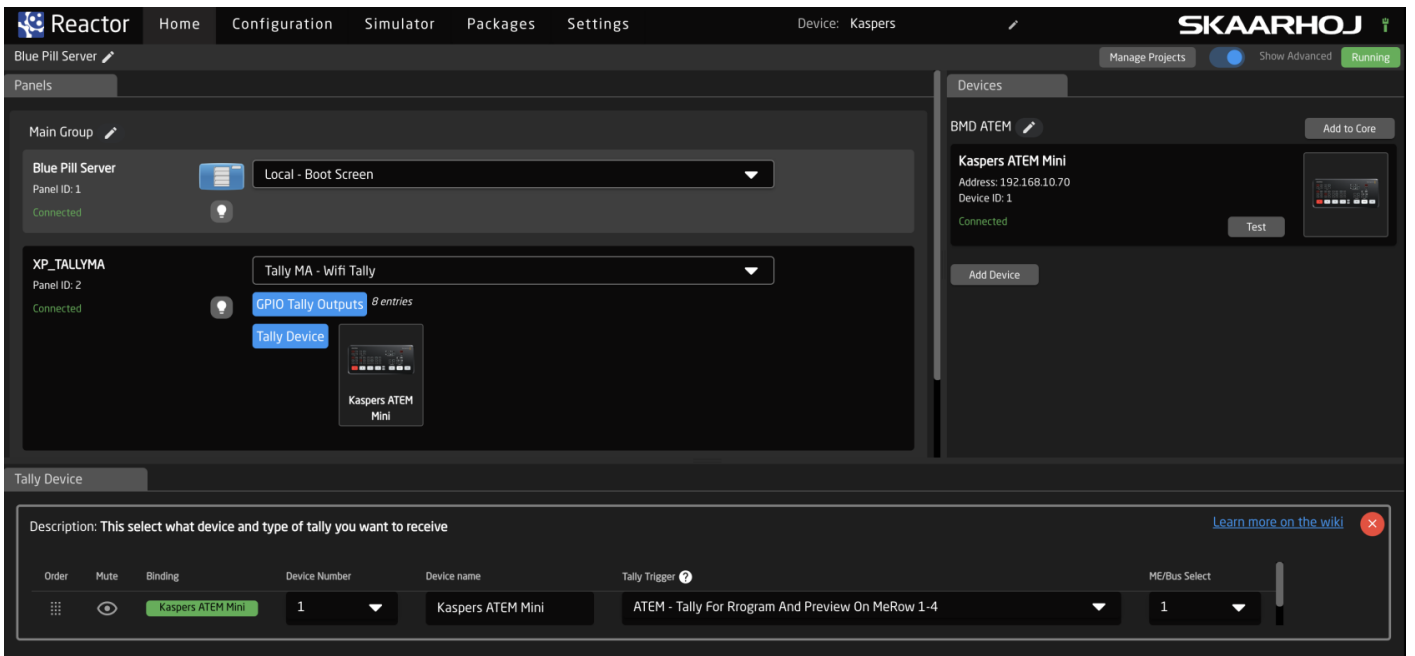
Reactor Configuration - Out of the Box

To integrate the lamp with devices like a video switcher, add the panel in Reactor. Click 'Add Panel' and locate it on the network. In the "Tally Trigger" dropdown, choose from the preset mappings SKAARHOJ provides for widely-used video switchers and routers.





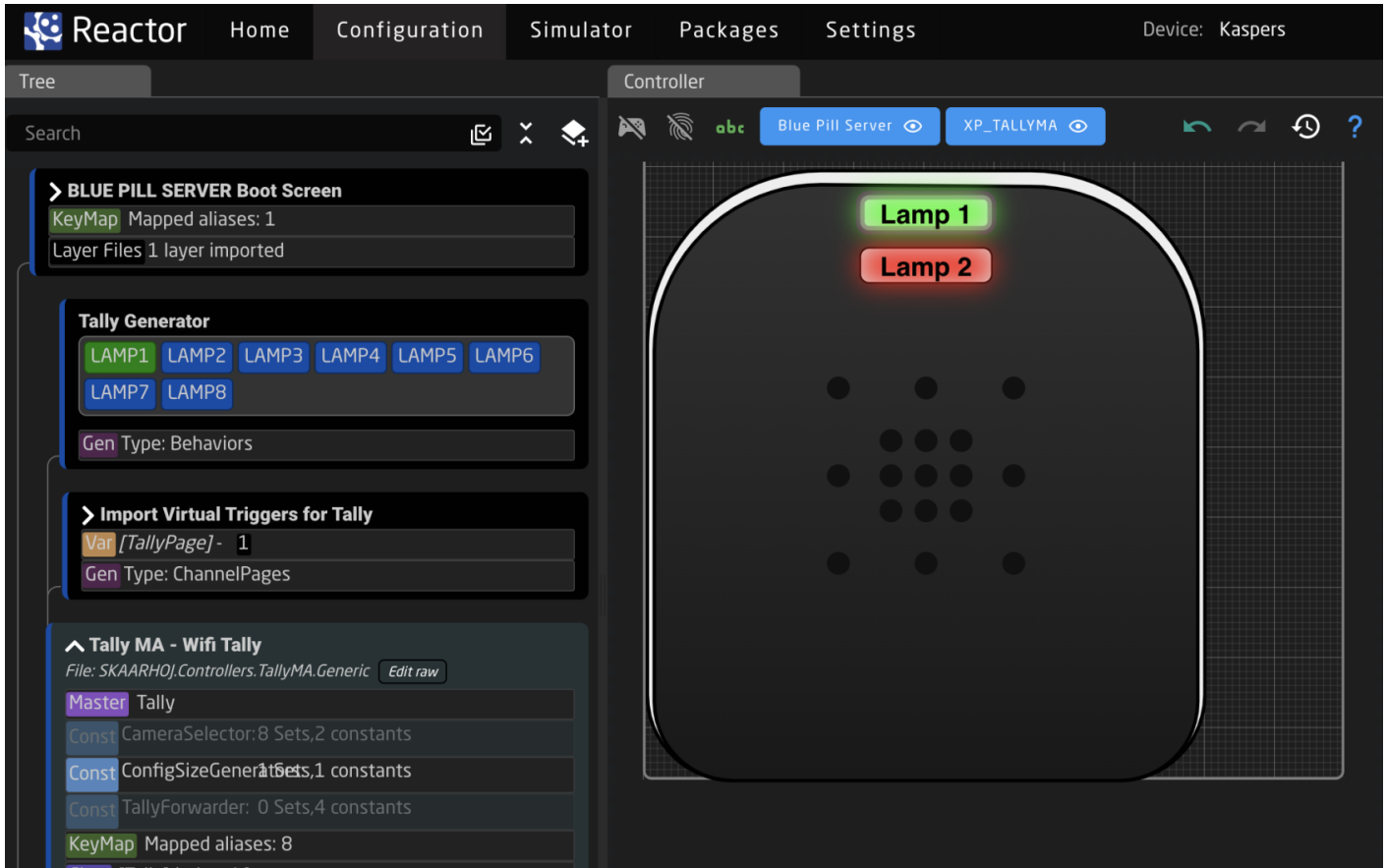
Click the blue button "Tally Device", add a new entry like this:



In the drop-down called "Tally Trigger" you select existing mappings SKAARHOJ have done for popular video switchers and routers.

Customization

The Tally-MA lamps, being consolidated as RGB outputs in a Raw Panel device, offer flexible usage, including bespoke configurations through the 'Configuration' tab in Reactor. While more advanced than the ready-made configurations, those wishing to explore custom setups will find this feature invaluable. However, a deeper dive into this topic will be covered in another article.



Revision #4

Created 9 August 2023 12:45:41 by Kasper

Updated 18 November 2023 21:07:59 by Kasper